

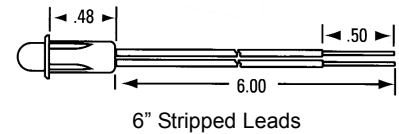
Standard (T1-3/4) LED's mounted in durable nylon cases and ready to speed mount and eliminate additional mounts and parts.

2 Volt Snap-In LED LAMPS for .250" diameter mounting holes



2 Volt LED Panel Lamp for 1/4" hole size. Considered the "universal" type as it can be used with virtually any DC voltage with a resistor (package shows how to determine resistor value). And it can be used with AC voltages with a diode and resistor. The lamp has 6" long wire lead set (black / red), which is stripped and tinned, ready to solder. Body color black (nylon).

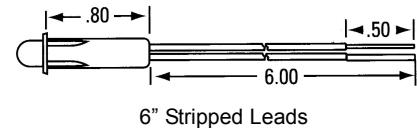
Part No.	Voltage	Description	Terminals
11-2410	2-volt	RED	6" stripped leads
11-2412	2-volt	AMBER	6" stripped leads
11-2414	2-volt	GREEN	6" stripped leads



28 Volt Snap-In LED LAMPS for .250" diameter mounting holes

28 Volt LED Panel Lamp for 1/4" hole size. The series has 6" long black/red lead wires. Lead wires are stripped and tinned for quick soldering or adding crimp connectors. Body color and molded bezel is black in color.

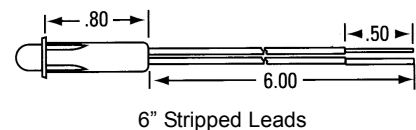
Part No.	Voltage	Description	Terminals
11-2430	28-volt	RED	6" stripped leads
11-2432	28-volt	AMBER	6" stripped leads
11-2434	28-volt	GREEN	6" stripped leads



125 Volt Snap-In LED LAMPS for .250" diameter mounting holes

125 Volt LED Panel Lamp for 1/4" hole size. Use in appliances and similar applications where standard mains voltage is present. The series has 6" long black/red lead wires. Lead wires are stripped and tinned for quick soldering or adding crimp connectors. Body color and molded bezel is black in color.

Part No.	Voltage	Description	Terminals
11-2450	125-volt	RED	6" stripped leads
11-2452	125-volt	AMBER	6" stripped leads
11-2456	125-volt	GREEN	6" stripped leads



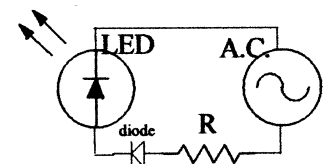
Use of LED Lamp Assembly.

Use this LED Lamp Assembly with the appropriate voltage (see front of card for voltage). NOTE: Correct polarity must be observed for this device to work properly; connect the red colored wire to positive and the black wire to the negative.

The 12-14 Volt Lamp Assemblies are intended for use in automobiles and trucks with about (standard) 13.8 volts (most vehicles). They may, of course, be used in other circuits that provide voltage in the twelve to fourteen volt range. No additional resistor needs to be used.

The 24-28 volt values are generally used in systems such as control panels. If you plan to use the lamp assembly with AC, then connect a diode in series with the lamp assembly. No additional resistor needs to be used.

Two volt LED assemblies are also available from your local supplier. A 2 volt LED may be used with practically any higher voltage, simply calculate the value of resistor to use in series with the LED. The 2-volt LED assemblies are supplied with information on each card describing how to determine the resistor value for both AC and DC with a simple formula or by following a chart.



Above; Typical AC circuit using a diode. The "R", or resistor is not necessary for 12-14 or 24-28 volt assemblies when they are used @ rated voltages.